



## OUTBACK AUTO

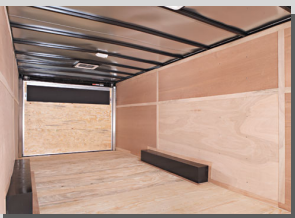
### OUTBACK AUTO

Weekend warriors and car haulers on a budget looking for a brand name trailer: Here's what you've been waiting for! Pace American, the most recognized national brand in quality trailers offers the latest in affordable enclosed auto hauling. The OutBack(tm) Auto models are similar to their popular Outback Cargo model siblings, but offer auto hauler sizes and features at an entry-level cost.

OutBack Auto models are built off a proven Pace auto trailer platform utilizing dust-proof sidewalls and other time tested components. They come in two sizes with a tandem 3500 lb. axle configuration. Outback has better customer service thanks to a national dealer network of over 450 stores. So you'll never be stranded should you need parts or service.

### STANDARD FEATURES

- Flat-Top Roof Design
- Dexter EZ Ride Spring Axles
- 15" Trailer Rated Bias Ply Tires on Auto Models
- Spoke-Style Steel Wheels w/ E-Coat Prime and Powdercoat Finish
- Smooth Aluminum Fenders
- 6" Steel I-Beam Frame on 7' & 8.5' Wide Models
- Chip Resistant Undercoating
- White Aluminum Exterior
- Body Color Aluminum Wrapped Rear Corner Posts and Header
- Rear Ramp Door w/Spring Assist & Flap w/ 5500# Capacity
- 36" Precision, Jig-Built SX Sidedoor with Strap Hinges & Barlock
- Automotive Style D-Bulb Weatherstripping
- Long Life Clear Coat on Zinc Plated Fasteners
- Zinc Plated Safety Chains with Security Clasp Hooks
- Lauan Finished Interior
- Exterior Grade Plywood Floor
- Galvanized Roof
- High-Tech Roof Sealant
- High Quality 12v Lighting
- 3-Year Honest, Fast and Fair Limited Warranty
- Quad Rear Taillights



Outback Auto Hauler features a wood lined interior with painted steel wheel boxes.



OutBack Auto Haulers are available as bumper-pull tag models in 20' & 24' lengths; perfect for the racer, collector, or hobbyist making the transition into the world of enclosed trailering.

**OUTBACK AUTO**



# OUTBACK AUTO

## FAMILY FEATURES

- 8.5' Wide in 20' or 24' Lengths
- Dexter(reg) EZ Ride Axles with EZ Lube Hubs
- All-Wheel Electric Brakes
- Flat-Top, Flat-Front Body Design
- Heavy Duty 5500# Capacity Rear Ramp Door
- Rust Resistant Galvaneal Rear Cross Member
- 36" Solid Core Side Door with Barlock
- .030 White Aluminum Exterior
- Lauan Lined Interior
- Auto Hauler Package Available
- Brand Name Resale Value

## OPTIONAL EQUIPMENT

- OutBack Package A or B or C

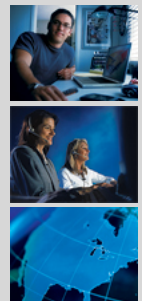
The front A-frame is constructed of steel tube integrated into the main frame and includes a 2-5/16" coupler with a 2000 lb. tongue jack.



PACE TRAILERS ARE DESIGNED AND BUILT FROM THE GROUND UP BY PROFESSIONALS WHO ACTUALLY USE TRAILERS.

OUR CUSTOMER SERVICE HOTLINE IS JUST ONE OF MANY WAYS PACE SUPPORTS YOU AFTER THE SALE. CALL US AT 800-247-5767.

FRIENDLY DEALERS FROM COAST-TO-COST OFFERING SALES, SERVICE, AND PARTS DIFFERENTIATE PACE FROM THE COMPETITION.



This 36" solid core side door is stronger and more durable than the competition and features automotive style D-bulb weatherstripping for a water-tight seal. A zinc-plated barlock is also provided for security.



Your Closest Authorized Pace American Dealer:

**Find your nearest Pace American dealer at**  
**<http://www.paceamerican.com/find/>**

paceamerican.com 800.247.5767

## OUTBACK AUTO